



OH&S Safety Matters

Autumn Health & Safety

So often we make health and safety a short-term priority, but not actually a value for our organizations or ourselves. As you well know it is easy to get caught up in the “routine” of everyday work life and think less and less about health and safety.

Whether you are a construction worker, maintenance worker, mine worker, or an office clerk, it’s all the same—we do what we have to do to get the job done. This usually means we don’t always put the thought or emphasis on health and safety.

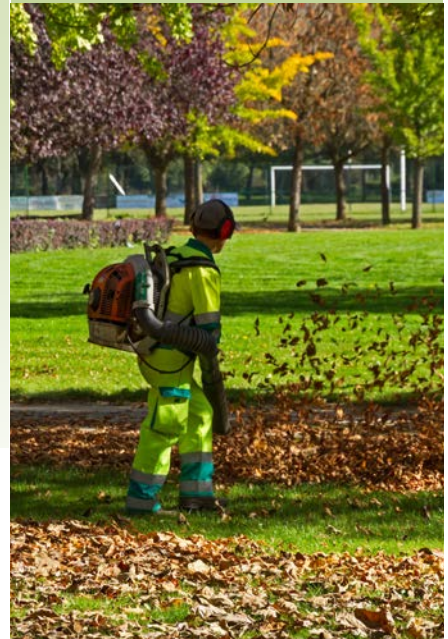
It can be a similar clash for corporations that are focused on and need to be focused on bottom line results, product inventory, or customers served. Health and safety can sometimes become an afterthought when the pace needs to pick up in order to hit the numbers. On the other hand, when we talk about health and safety within our boardrooms and during safety tailgate meeting we put safety at the forefront, we are demonstrating its significance. But, ultimately, that’s just the beginning. How can we further show the value of health and safety?

So often we make health and safety a short-term priority, but not actually a value for our organizations or ourselves.

Health and safety programs are tools to help establish and enable a culture that promotes health and safety and puts workers first. The programs can provide a deeper understanding and clarity for how we should operate within our everyday work tasks and activities. Getting buy-in for health and safety is crucial in empowering the workforce and building a culture that truly values health and safety. Everyone should feel responsible for health and safety and cognizant of risks and potential risks in their surroundings. The closer we get to making it a value, the better we will be when working on the jobsite or at home.

As the air turns cooler and leaves drop from the trees, it’s important to keep Autumn Health and Safety at the forefront of our minds.

October Issue 2018



Contents

Autumn Workplace Health and Safety	1
Pipeline Construction	2
Innovative programs	3
Administrative Notes	4
Staying in Touch	4



Pipeline Safety Program

Pipeline Construction Safety Orientation

Pipeline construction includes anyone who engages in, or who is responsible for construction activities that include but are not limited to surveying, staking, tree falling, right-of-way clearing, drilling, blasting, trench ditching, lifting pipe, stringing pipe, bending pipe, welding pipe, coating pipe, testing pipe, trench backfilling, site clean-up and reclamation.

The OH&S pipeline construction safety training program has been designed as an orientation for those who undertake pipeline construction work activities and is also intended for personnel who are required to supervise pipeline construction operations.

There are more than 840,000 km of transmission, and distribution pipelines in Canada including 117,000 km of large-diameter transmission lines with provinces having significant pipeline infrastructure. Of this amount, about 73,000 km are federally regulated pipelines, which are primarily transmission pipelines. Pipelines are generally buried underground and operate in both remote and populated areas, with major crude oil and natural gas pipelines servicing most major Canadian cities.

We all depend on the oil and gas industry pipelines for distribution of products such as natural gas, water and oil. There are more than 450,000 km of these distribution pipelines in Canada.

Pipelines transport refined and unrefined products that include natural gas, sour natural gas, liquid hydrocarbons (such as crude oil and high vapour pressure hydrocarbons), water and other miscellaneous gases.

Pipelines are recognized as a safe and economical mode of transport and essential to a secure pipeline operation is the protection of public safety, respecting those affected by oil and gas activity, and conserving the environment.

The oil and gas sector plays a significant role in maintaining the strength of Canada's economy. This sector directly and indirectly employs about 740,000 people, contributes nearly 11 percent of Canada's GDP and pays on average more than \$20 billion in taxes, and royalties to government each year.

The federal health and safety legislation is commonly referred to as the Canada Labour Code Part II and its regulations. Approximately 10% of the Canadian workforce falls under the OH&S jurisdiction of the federal government and the code applies to persons employed by pipeline companies.

The remaining 90% of workers fall under the legislation of the province or territory where they work.

Natural gas and hazardous liquid pipelines that transport gasoline

and distillates such as diesel fuel and jet fuel all work basically in the same way. A product is put into the pipeline, pressure is applied, and the product is forced to flow toward an area of lower pressure. Pumps and compressors provide the force and pressure to move liquid and gas products through a pipeline system. Pumps are commonly associated with hazardous liquid pipelines; compressors are associated with gas pipelines. Pump & compressor stations house the pumps and compressors. Pump & compressor stations are placed at intervals along hazardous liquid and gas transmission pipelines where needed to sustain necessary pipeline pressures and flows.

Control centre operators use computerized systems to monitor and control the operation of the pipeline that is usually buried underground, line markers and warning signs are located at frequent intervals along pipeline rights-of-way (ROW). Pipeline companies are responsible for maintaining their rights-of-way to protect the public and environment, the line itself, and customers from loss of service. In addition, pipeline integrity management programs use tools and technologies to ensure that pipeline systems perform safely and reliably.



New Innovative Equipment Training Programs



*Compact Excavator
Operator*

With versatility and ease to operate, the compact excavator is capable of performing a wide range of tasks that include utility trenching, tree harvesting, repair digs, small scale excavation operations, digging graves, light demolition, home repair, renovation, and roadside applications. Compact Excavator operator training includes theory, hands-on, knowledge and practical evaluation. This program focuses compact excavator features and safety equipment; stability, driving with and without a load; ramps and grades; workplace specific hazards; shut down; the refuelling process and so much more.



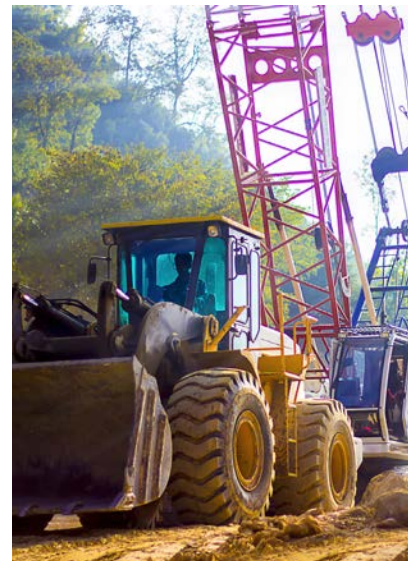
*Motor Grader
Operator*

A motor grader, also known as a road grader is a piece of heavy machinery used to create a smooth, wide, flat surface. Traditionally, the grader is used for maintenance of roads. Presently, these machines are also commonly used for fine grading, spreading, clearing debris and brush, earthmoving as well as for snow removal. A variety of attachments convert the motor grader into an even more versatile machine. The goal of this course is to help you better understand the operators responsibilities and show you how to protect the health and safety of you and your co-workers.



*Production Loader
Operator*

These are large pieces of mining equipment used for many tasks. A wheel loader is versatile and has a large capacity. You would use a large wheeled loader for building roads, preparing the jobsite, digging, carrying heavy loads, or moving materials. Only qualified personnel who have been trained in the inspection, application, and operation including recognition and avoidance of hazards shall operate a large wheeled loader. Training requirements include theory, hands-on, knowledge verification and practical evaluation. Get your training and authorization today.



Administrative Notes

Registry Services

The OH&S Training Registry database and quality assurance process helps to ensure that Training Centres, Instructors and Instructor Trainers are compliant with the Teaching and Accreditation Standard, occupational legislations and industry regulations. Its true that staying in compliance allows the OH&S Registry to authorize us to teach and issue students with certification cards.



don't hesitate to contact Christina your membership director;

Christina Hemsworth,
christina@ohandscanada.ca

In addition, a big part of what the registry does is to review classroom training records for accuracy.

If you have questions about any of the services that the Registry offers, or if you have any concerns about the Digital Document Transfer process for submitting your class documents to the Registry, please

Along with the fall season comes shorter days, so make the extra effort to stay involved with your family to ensure that they stay safe and healthy this Autumn !

As always, we thank you for your continued dedication to safety training and we look forward to serving you!

OH&S Safety Training Solutions 778.471.6407

Classroom Based - Instructor Led Safety Training



ATV and LTV Operator
Our ATV and LTV Operator course has been developed for those with an occupational requirement to be trained to safely undertake work activities that involve the operation of an All Terrain Vehicle (ATV) and/or a Utility Terrain Vehicle (LTV). The goal of this course is to help you better understand what an ATV and LTV Operator responsibilities are and how to manage those responsibilities to protect your health and safety and the health and safety of your co-workers.



Boom Trucks, Ladders and Aerials
This training program encompasses activities that involve the operation of Light Duty Boom Trucks (with a rated capacity of less than five tons with a boom length of less than 25 feet based on the manufacturer's use) ladders, hoists and the rigging of loads. Only qualified persons trained in the inspection, application, and operation of a crane or hoist, including the recognition and avoidance of hazards associated with their operation, shall operate the equipment.



Confined Space Entry (General & Specialty)
Confined spaces are potentially one of the most dangerous of all workplaces. However the goal of this course is to prepare you to safely perform work in a confined space. By the end of this course you will be able to describe a confined space, describe various hazards and know how to handle hazards that are identified, you will understand the confined space permit system and about something go terribly wrong, you will know how to effect a non entry rescue.



Confined Space Entry - Mining Industry
The Mines Act and the accompanying Health, Safety and Rehabilitation Code for mines in British Columbia is the Code protect workers health and safety and the Mines Act requires that confined spaces activities. This legislation obligates the mine manager to ensure that written procedures are developed and each person who is assigned duties or responsibilities related to entry into a confined space is adequately trained. This course will provide you with the information that is used to implement a Confined Space Entry Program.



Confined Space Rescue Basics
The occupational health and safety regulation requires the employer to prepare a written confined space rescue program that includes procedures for rescue. This course will provide the information used to establish an industrial confined space rescue program and the training that is needed to prepare individuals to implement rescue operations. It takes a mix of prevention, planning, preparation, training and communication to create and sustain an effective Confined Space Rescue response.

© OH&S Training Library

2018 e-Catalog is Available

Are you ready to tap into a wider network of training programs. Get access to 100% of the OH&S safety training programs by simply sending me an e-mail and asking for a FREE copy of the training course library !

markh@ohandscanada.ca

OH&S
Safety
Matters

Staying in Touch

We want you to be aware that you always have the opportunity to opt-out from receiving OH&S Safety Training Solutions electronic communications. To opt-out, simply call OH&S Safety Training Solutions at 778.471.6407 and ask to be taken off the OH&S registry membership email list.

OH&S will never sell or rent your email address or information, and should you decide to no longer receive electronic communications from OH&S we will accommodate your decision to "unsubscribe".

We trust you will choose to continue to receive the **OH&S Safety Matters** newsletters and other promotional materials so you can stay up to date on new programs, best practice tips, and other OH&S Safety Training Solutions news.

We appreciate your business, and look forward to working with you to achieve your safety training goals. Thank you!



OH&S Safety Consulting and Training Solutions

Head Office 825 – J Laval Crescent Kamloops, BC V2C 5P2
Lower Mainland 9734 - 201 Street Langley, BC V1M 3E8

ph: 778.471.6407
ph: 778.957.6407